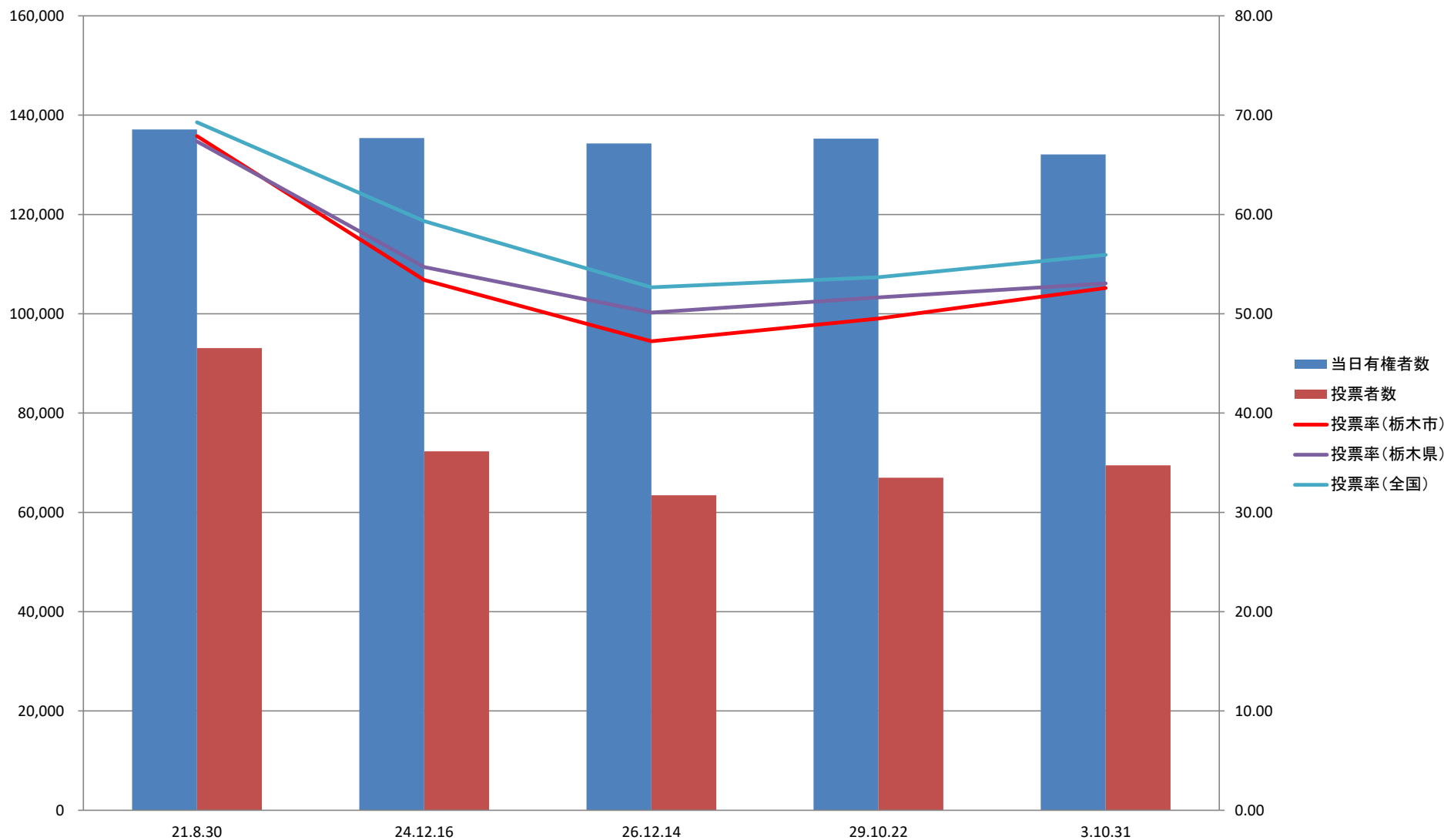


小選挙区

期日	選挙区	当日有権者数			投票者数			棄権者数			投票率						
		男	女	計	男	女	計	男	女	計	栃木市			栃木県			全国平均
											男	女	計	男	女	計	
21.8.30	西方町	2,734	2,883	5,617	2,007	2,023	4,030	727	860	1,587	73.41	70.17	71.75	68.09	66.61	67.35	69.28
	大平町	11,836	11,787	23,623	8,511	8,285	16,796	3,325	3,502	6,827	71.91	70.29	71.10				
	藤岡町	7,323	7,586	14,909	5,068	4,907	9,975	2,255	2,679	4,934	69.21	64.68	66.91				
	都賀町	5,439	5,638	11,077	3,884	3,819	7,703	1,555	1,819	3,374	71.41	67.74	69.54				
	岩舟町	7,659	7,625	15,284	5,295	5,102	10,397	2,364	2,523	4,887	69.13	66.91	68.03				
	栃木市	32,242	34,368	66,610	21,857	22,328	44,185	10,385	12,040	22,425	67.79	64.97	66.33				
	合計	67,233	69,887	137,120	46,622	46,464	93,086	20,611	23,423	44,034	69.34	66.48	67.89				
24.12.16	2区	2,663	2,801	5,464	1,629	1,547	3,176	1,034	1,254	2,288	61.17	55.23	58.13	56.21	53.25	54.71	59.32
	4区	24,295	24,721	49,016	13,744	12,770	26,514	10,551	11,951	22,502	56.57	51.66	54.09				
	岩舟町	7,605	7,547	15,152	4,310	3,987	8,297	3,295	3,560	6,855	56.67	52.83	54.76				
	5区	31,836	33,898	65,734	17,232	17,051	34,283	14,604	16,847	31,451	54.13	50.30	52.15				
	合計	66,399	68,967	135,366	36,915	35,355	72,270	29,484	33,612	63,096	55.60	51.26	53.39				
26.12.14	2区	2,624	2,773	5,397	1,484	1,392	2,876	1,140	1,381	2,521	56.55	50.20	53.29	51.62	48.65	50.12	52.66
	4区	31,606	31,926	63,532	15,884	14,710	30,594	15,722	17,216	32,938	50.26	46.08	48.16				
	5区	31,747	33,639	65,386	15,094	14,876	29,970	16,653	18,763	35,416	47.54	44.22	45.84				
	合計	65,977	68,338	134,315	32,462	30,978	63,440	33,515	37,360	70,875	49.20	45.33	47.23				
29.10.22	2区	2,650	2,735	5,385	1,514	1,407	2,921	1,136	1,328	2,464	57.13	51.44	54.24	52.63	50.69	51.65	53.68
	4区	31,857	32,026	63,883	16,216	15,304	31,520	15,641	16,722	32,363	50.90	47.79	49.34				
	5区	32,053	33,951	66,004	16,192	16,342	32,534	15,861	17,609	33,470	50.52	48.13	49.29				
	合計	66,560	68,712	135,272	33,922	33,053	66,975	32,638	35,659	68,297	50.96	48.10	49.51				
3.10.31	2区	2,562	2,586	5,148	1,499	1,440	2,939	1,063	1,146	2,209	58.51	55.68	57.09	53.78	52.36	53.06	55.93
	4区	31,075	30,984	62,059	16,937	16,167	33,104	14,138	14,817	28,955	54.50	52.18	53.34				
	5区	31,699	33,182	64,881	16,633	16,805	33,438	15,066	16,377	31,443	52.47	50.64	51.54				
	合計	65,336	66,752	132,088	35,069	34,412	69,481	30,267	32,340	62,607	53.67	51.55	52.60				

投票率の推移(小選挙区)



比例代表

期日	選挙区	当日有権者数			投票者数			棄権者数			投票率						
		男	女	計	男	女	計	男	女	計	栃木市			栃木県			全国平均
											男	女	計	男	女	計	
21.8.30	西方町	2,734	2,883	5,617	2,007	2,023	4,030	727	860	1,587	73.41	70.17	71.75	68.08	66.60	67.33	69.27
	大平町	11,836	11,787	23,623	8,510	8,285	16,795	3,326	3,502	6,828	71.90	70.29	71.10				
	藤岡町	7,323	7,586	14,909	5,064	4,904	9,968	2,259	2,682	4,941	69.15	64.65	66.86				
	都賀町	5,439	5,638	11,077	3,884	3,819	7,703	1,555	1,819	3,374	71.41	67.74	69.54				
	岩舟町	7,659	7,625	15,284	5,296	5,102	10,398	2,363	2,523	4,886	69.15	66.91	68.03				
	栃木市	32,242	34,368	66,610	21,851	22,319	44,170	10,391	12,049	22,440	67.77	64.94	66.31				
	合計	67,233	69,887	137,120	46,612	46,452	93,064	20,621	23,435	44,056	69.33	66.47	67.87				
24.12.16	2区	2,663	2,801	5,464	1,629	1,547	3,176	1,034	1,254	2,288	61.17	55.23	58.13	56.21	53.27	54.72	59.31
	4区	24,295	24,721	49,016	13,744	12,769	26,513	10,551	11,952	22,503	56.57	51.65	54.09				
	岩舟町	7,605	7,547	15,152	4,310	3,987	8,297	3,295	3,560	6,855	56.67	52.83	54.76				
	5区	31,836	33,898	65,734	17,229	17,054	34,283	14,607	16,844	31,451	54.12	50.31	52.15				
	合計	66,399	68,967	135,366	36,912	35,357	72,269	29,487	33,610	63,097	55.59	51.27	53.39				
26.12.14	2区	2,624	2,773	5,397	1,484	1,393	2,877	1,140	1,380	2,520	56.55	50.23	53.31	51.62	48.66	50.13	52.65
	4区	31,606	31,926	63,532	15,889	14,712	30,601	15,717	17,214	32,931	50.27	46.08	48.17				
	5区	31,747	33,639	65,386	15,098	14,890	29,988	16,649	18,749	35,398	47.56	44.26	45.86				
	合計	65,977	68,338	134,315	32,471	30,995	63,466	33,506	37,343	70,849	49.22	45.36	47.25				
29.10.22	2区	2,650	2,735	5,385	1,512	1,407	2,919	1,138	1,328	2,466	57.06	51.44	54.21	52.63	50.69	51.65	53.68
	4区	31,857	32,026	63,883	16,215	15,300	31,515	15,642	16,726	32,368	50.90	47.77	49.33				
	5区	32,053	33,951	66,004	16,189	16,344	32,533	15,864	17,607	33,471	50.51	48.14	49.29				
	合計	66,560	68,712	135,272	33,916	33,051	66,967	32,644	35,661	68,305	50.96	48.10	49.51				
3.10.31	2区	2,562	2,586	5,148	1,500	1,439	2,939	1,062	1,147	2,209	58.55	55.65	57.09	53.77	52.35	53.05	55.92
	4区	31,075	30,984	62,059	16,939	16,160	33,099	14,136	14,824	28,960	54.51	52.16	53.33				
	5区	31,699	33,182	64,881	16,620	16,790	33,410	15,079	16,392	31,471	52.43	50.60	51.49				
	合計	65,336	66,752	132,088	35,059	34,389	69,448	30,277	32,363	62,640	53.66	51.52	52.58				

投票率の推移(比例代表)

